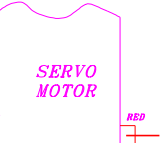
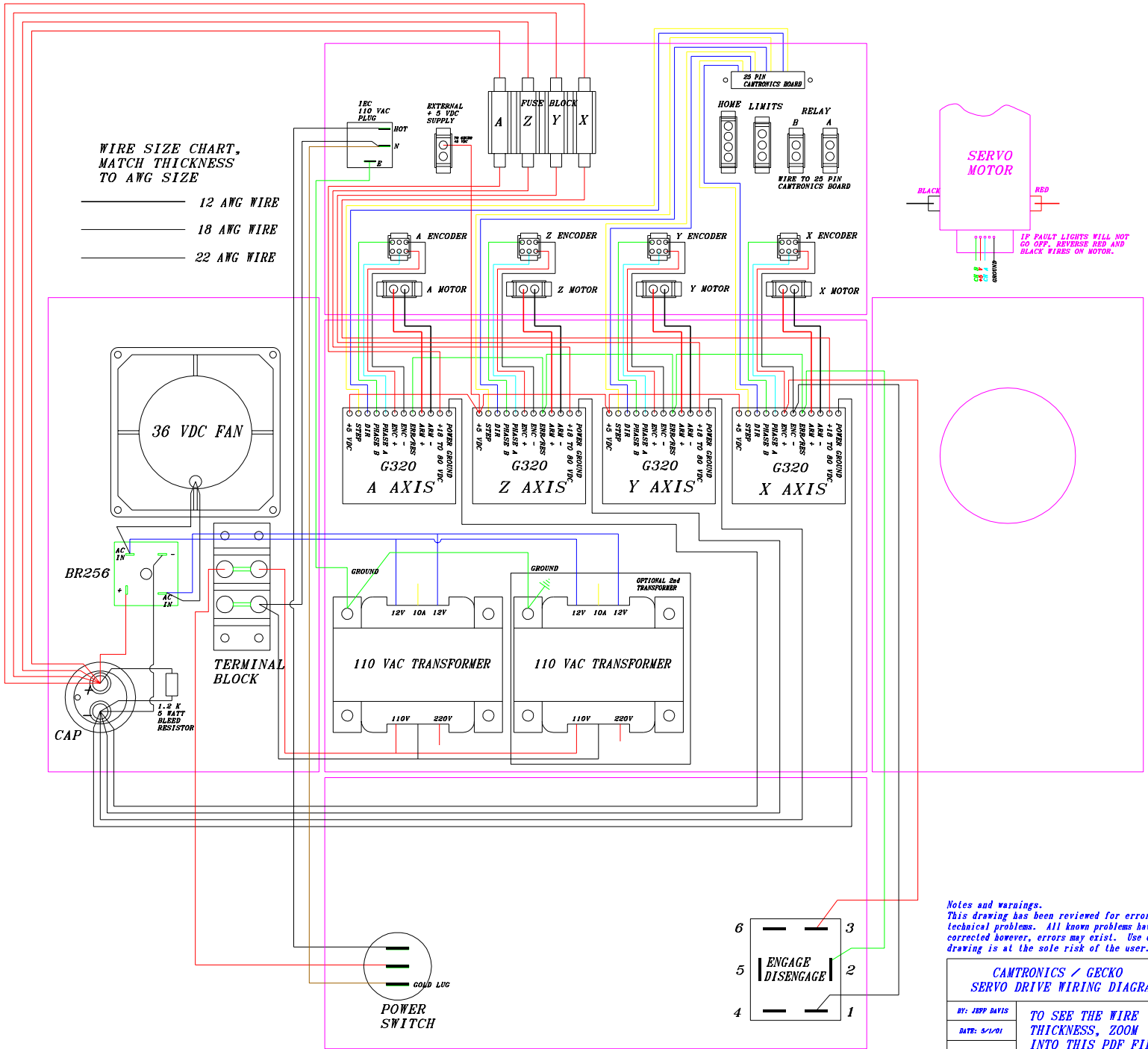


WIRE SIZE CHART.  
MATCH THICKNESS  
TO AWG SIZE

- 12 AWG WIRE
- 18 AWG WIRE
- 22 AWG WIRE



IF FAULT LIGHTS WILL NOT GO OFF, REVERSE RED AND BLACK WIRES ON MOTOR.

Notes and warnings.  
This drawing has been reviewed for errors and technical problems. All known problems have been corrected however, errors may exist. Use of this drawing is at the sole risk of the user.

<b>CAMTRONICS / GECKO SERVO DRIVE WIRING DIAGRAM</b>	
BY: JEFF DAVIS	<b>TO SEE THE WIRE THICKNESS, ZOOM INTO THIS PDF FILE.</b>
DATE: 2/1/01	
<b>REV B</b>	